

Sedia Nada SL

cod. S4167

belca



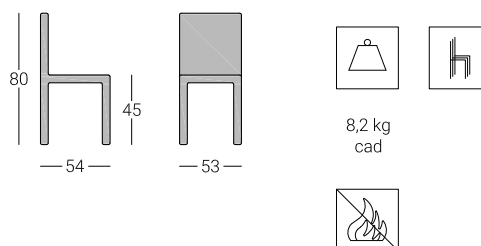
Descrizione

Telaio in tondino di acciaio con scocca in lamiera forata.

Verniciatura a polveri termoindurenti in vari colori.

Impilabile.

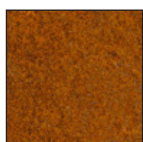
Dimensioni



Colore sedute



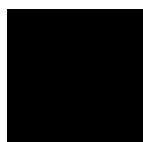
BIANCO
RAL 9010



CORTEN



GRIGIO
ALLUMINIO



NERO